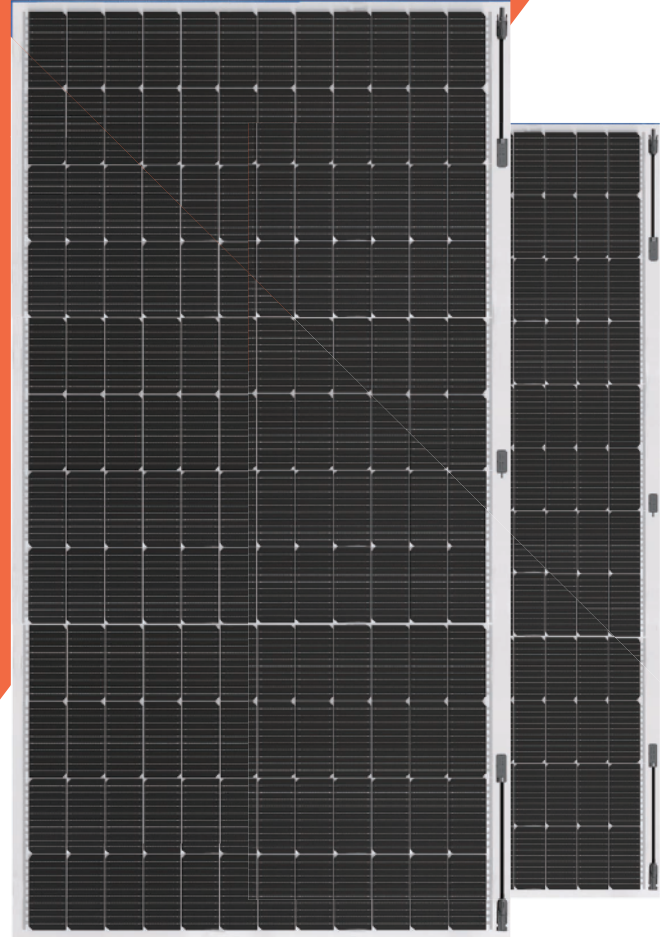


515W~525W

Monocrystalline silicon
Light weight flexible
solar panel



Key Features

Lightweight

Optimized composite materials, 60% lighter at the same power

Flexible

Special manufacturing process and materials provide bending ability

Excellent Appearance and Performance

Esthetics module design, no flare effect, "0" risk of micro crack

Easy transportation and installation

Original design making it far less costly for transportation and installation

Customization

Customization for various scenarios, high additional value

Superior Low Irradiance Performance

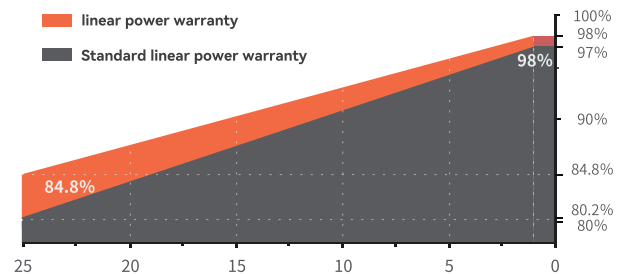
Excellent low irradiance performance, increase power generation in low-light conditions like mornings, evenings and cloudy days

Quality system: ISO 9001: 2005



CE RoHS

Linear Performance Warranty

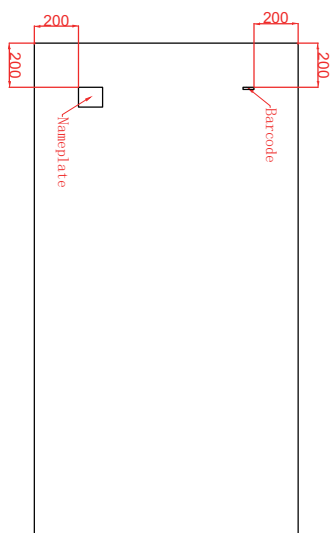
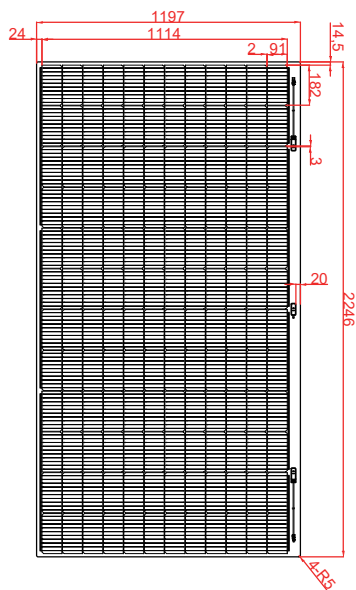


Leading product and power warranty

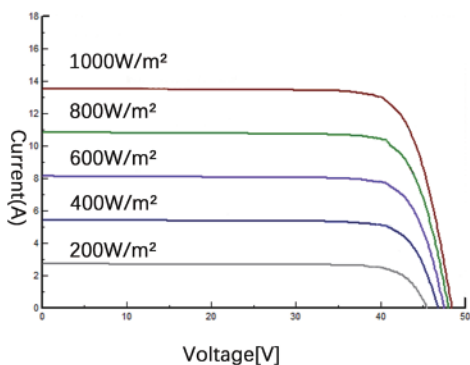
12 Materials and workmanship warranty

25 Linear power warranty

The size of module



Characteristic Curves



Electrical Characteristics

ITEM	PURES-515-F8MA	PURES-520-F8MA	PURES-525-F8MA
Maximum Power (Pmax)	515W	520W	525W
Maximum Power Voltage (Vmp)	40.2V	40.3V	40.4V
Maximum Power Current(Imp)	12.85A	12.94A	13.03A
Open-circuit Voltage (Voc)	48.3V	48.4V	48.5V
Short-circuit Current(Isc)	13.48A	13.56A	13.67A
Module Efficiency(%)	19.16%	19.34%	19.53%
Operating Temperature	-40 °C to 85 °C		
Maximum System Voltage	1500VDC		
Maximum Series Fuse Rating	25A		
Application Cla ss	Class A		
Power Tolerance	0~+5 W		
STC:Irradiance 1000W/m ² , module temperature 25 °C , AM=1.5			

Mechanical Characteristics

Solar Cell	Monocrystalline silicon cell
Cell Size	182×91mm
No. of cells	144
Module Dimensions	L:2246*W:1197*H:3 mm L:2246*W:1197*H:18 mm(J-Box included)
Weight	9.1kg
Backsheet	White PV Backsheet
J-Box	IP 67
Output cables	4mm ²
Cable length	(+)/(-) 500 mm
Connector	MC4 compatible

Temperature Characteristics

NOCT(Nominal Operating Cell Temperature)	41 ± 2°C
Temperature Coefficient of Pmax	-0.38%/°C
Temperature Coefficient of Voc	-0.28%/°C
Temperature Coefficient of Isc	0.020%/°C

Packaging

Container	20'GP	40'HQ
Pieces per pallet	70	70
Pieces per container	350	700